

# State of Wyoming Corner Record

(In compliance with the CORNER PERPETUATION AND FILING ACT, Wyoming Statutes, 1977, Section 36-11-101, et. seq., and the Rules and Regulations of the Board of Registration for Professional Engineers and Professional Land Surveyors)

Reverse side of this form may be used if more space is needed.

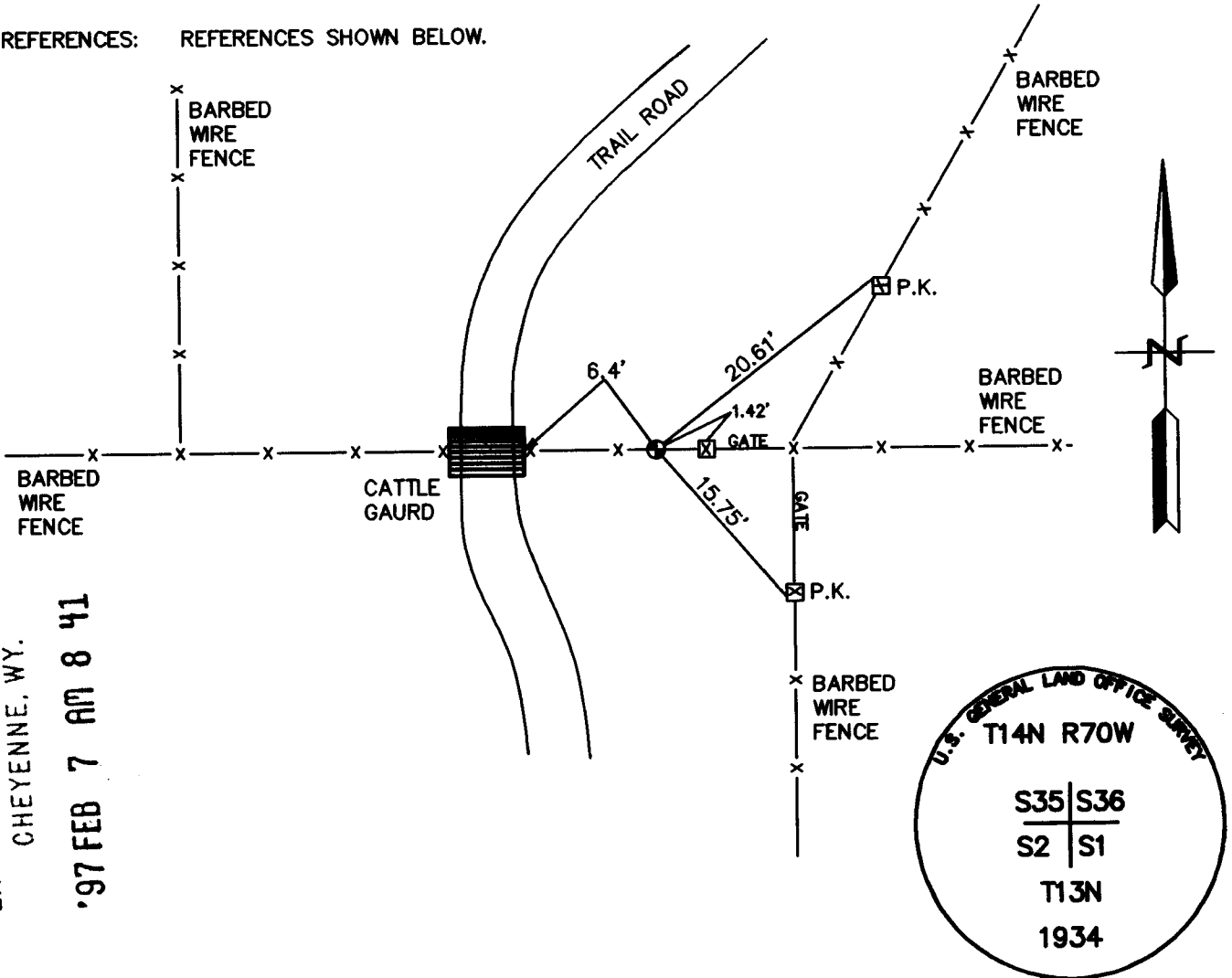
Record of original survey and citation of source of historical information (if corner is lost or obliterated). Description of corner monumentation evidence found and/or monument and accessories established to perpetuate the location of this corner. Sketch of relative location of monument, accessories, and reference points with course and distance to adjacent corner(s) (if determined in this survey). Method and rationale for reestablishment of lost or obliterated corner.

**GLO RECORD:** SET AN IRON POST, 3' LONG, 2" DIAMETER, 27" IN THE GROUND, FOR THE CORNER OF SECTIONS 1, 2, 35, AND 36 WITH BRASS CAP MARKED AS SHOWN BELOW. RAISED A MOUND OF STONE, 2' BASE, 1.5' HIGH, WEST OF CORNER.

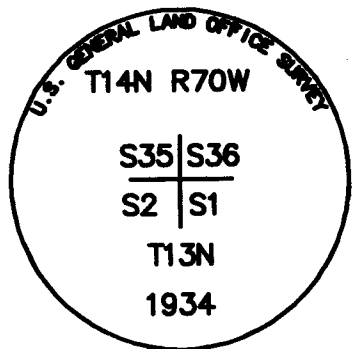
**MONUMENT FOUND:** FOUND A 3" GLO BRASS CAP BURIED 0.3' DEEP.

**MONUMENT SET:** SET NOTHING.

**REFERENCES:** REFERENCES SHOWN BELOW.



197566  
 LARAMIE COUNTY CLERK  
 CHEYENNE, WY.  
 '97 FEB 7 AM 8 41



Date of Field Work: 4-16-96 Office Reference: 96093

**CROSS INDEX DIAGRAM**

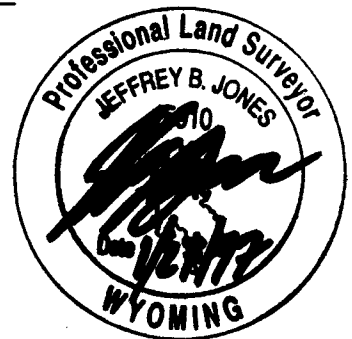
A	2	3	4	5	6	7	8	9	10	11	12	13	14	15	16	17	18	19	20	21	22	23	24	25	
B																									
C	6		5		4		3		2		1														
D																									
E																									
F																									
G	7		8		9		10		11		12														
H																									
I																									
J																									
K																									
L	18		17		16		15		14		13														
M																									
N																									
O																									
P	19		20		21		22		23		24														
Q																									
R																									
S																									
T	30		29		28		27		26		25														
U																									
V																									
W																									
X	31		32		33		34		35		36														
Y																									
Z	1	2	3	4	5	6	7	8	9	10	11	12	13	14	15	16	17	18	19	20	21	22	23	24	25

Firm/Agency, Address

**STEIL SURVEYING SERVICES, LLC.**  
**1102 WEST 19th STREET**  
**CHEYENNE WY 82001**

Telephone Number: **(307) 634-7273**

This corner record was prepared by me or under my direction and supervision.  
**SEAL & SIGNATURE**



**BOOK 1443**

Corner Name: SECTION CORNER Section: 35 T14N R70W ; 6th P.M. Cross-Index No.: Z-21

SBRPEPLS/PLSM March 1994

0977